



Rely on it.

Making the impossible possible

RENOLIT ALKORDESIGN



UNIZO office building

CHALLENGE

*Dedalus Architects specified zinc for waterproofing the timber frame **UNIZO office building** in Eeklo. Not only for the roof, but also for the facade and bottom side of a unique construction detail. **To be precise, waterproofing horizontally, vertically and even upside down!***

To entirely cover the structure however, appeared not to be possible when using zinc. If you opt to use this traditional waterproofing material a ventilated air space must be provided underneath the zinc covering. This of course entails an opening for ventilation purposes underneath the roof edge, if not, condensation will occur. In the case of a building where the facade has to connect seamlessly with the roof and the underside, leaving an opening is not a possibility. So, despite the attractive appearance of zinc, a waterproofing solution with this material was not an option.

SOLUTION

Thanks to their collaboration with roofer ALBITUM and previous experiences with **RENOLIT** roofing products, Dedalus Architects came up with a nice alternative: **RENOLIT** ALKORDESIGN standing seam imitation. A perfect solution for a difficult challenge. No ventilation needed, no connection problems, the same looks as a zinc roof and, above all, more cost effective!

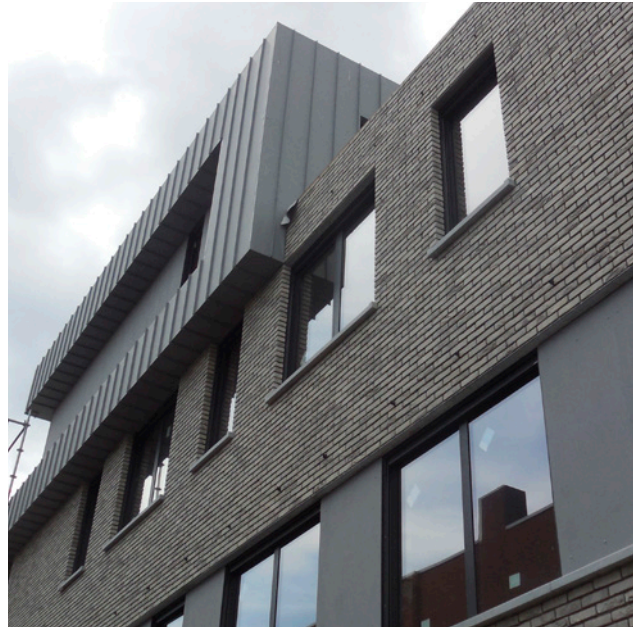
Not an easy job, though! At least if you want to have an aesthetically pleasing smooth result with a perfect finish at the corners and edges. As Dedalus hold very high standards, a special training course was organised for roofing company ALBITUM at **RENOLIT** Belgium. Thanks to the assistance of **RENOLIT**, ALBITUM really did a splendid job.



To get the perfectly fitting and tightly stretched looks, contact glue was used for the facades and ceilings, in order to prevent the membrane from sagging. On the roof edges and corners, where a seamless connection was required, metal sheet profiles were fixed first, then both ends of the membranes were welded onto the profile without an overlap. This resulted in perfectly straight edges! Afterwards, to get the look of real zinc, **RENOLIT** ALKORDESIGN profiles were welded onto the membrane and bevelled at the corners to have a seamless and continuous standing seam effect.

Both Dedalus Architects and **UNIZO** were very satisfied with the result.





OFFICE BUILDING

- Regional office of UNIZO
Belgian organisation of self-employed and small and medium sized enterprises
- Eeklo, Belgium
- Architectenbureau Dedalus

PRODUCTS

- Timber frame construction with OSB cladding
- **RENOLIT ALKORDESIGN**
Mid grey 1.5 mm with L profiles (200 m²)

